



350 HIGHWAY RETAIL BUILDING FOR LEASE

6912 Hunter Street, Raytown, Missouri



LEASE RATE: \$2,000/MONTH NNN | 1,200 SF BUILDING

DEMOGRAPHICS

	1 mile	3 miles	5 miles
Estimated Population	6,759	56,755	132,056
Avg. Household Income	\$68,945	\$80,395	\$74,930

- Highway retail building available
- Across from McDonald's and next to Dairy Queen
- Small Office, Medical, Insurance, Service location
- Great visibility
- High traffic volume
- Borders Kansas City limits with No E-Tax
- 5 miles to Truman Sports Complex-2026 World Cup

 [CLICK HERE TO VIEW MORE LISTING INFORMATION](#)

For More Information Contact: *Exclusive Agent*
KARSYN SMITH | 816.412.7372 | karsynsmith@blockandco.com
BILL MAAS, CCIM | 816.412.7392 | bmaas@blockandco.com





350 HIGHWAY RETAIL BUILDING FOR LEASE

6912 Hunter Street, Raytown, Missouri

PHOTOS

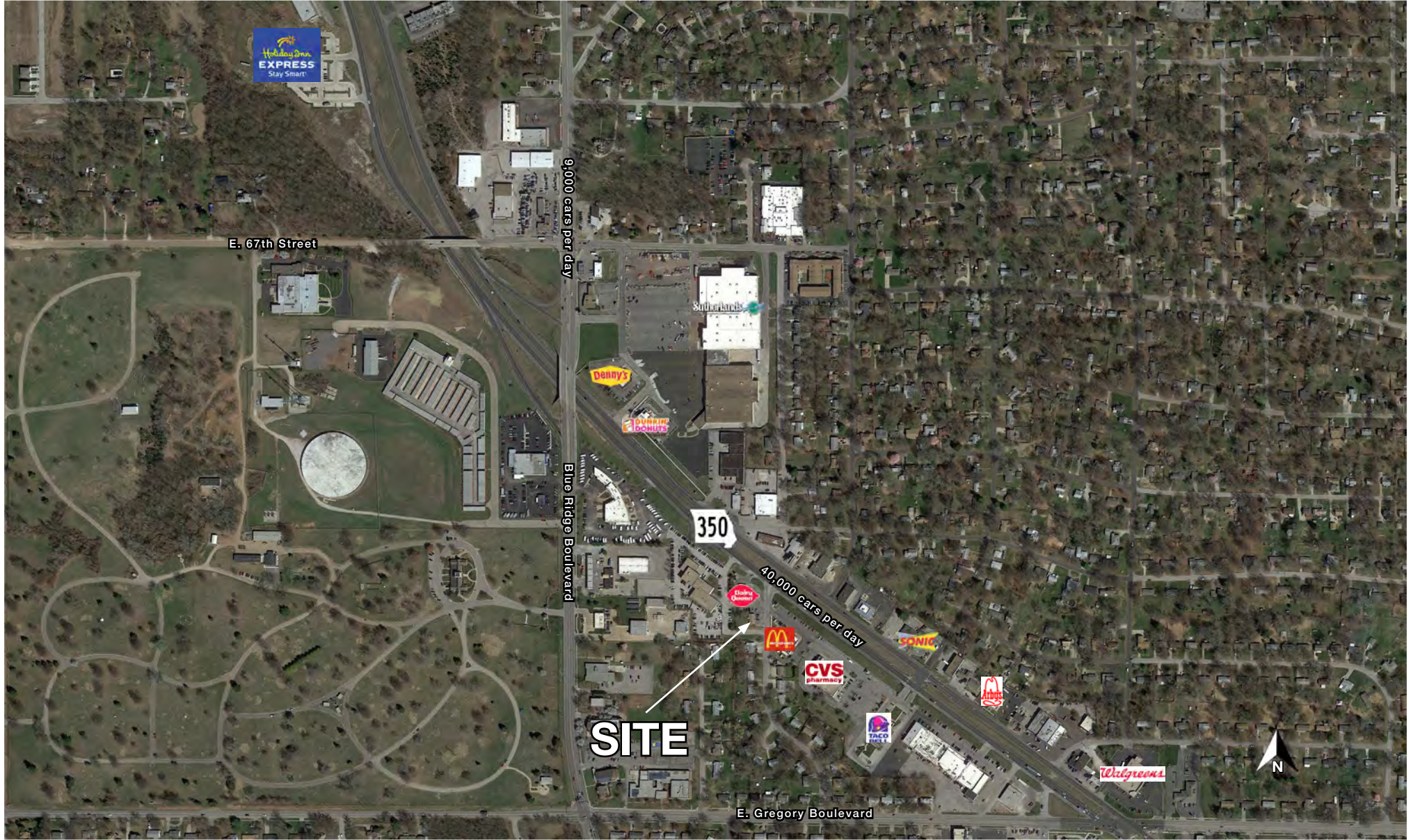




350 HIGHWAY RETAIL BUILDING FOR LEASE

6912 Hunter Street, Raytown, Missouri

AERIAL





350 HIGHWAY RETAIL BUILDING FOR LEASE

6912 Hunter Street, Raytown, Missouri

AERIAL

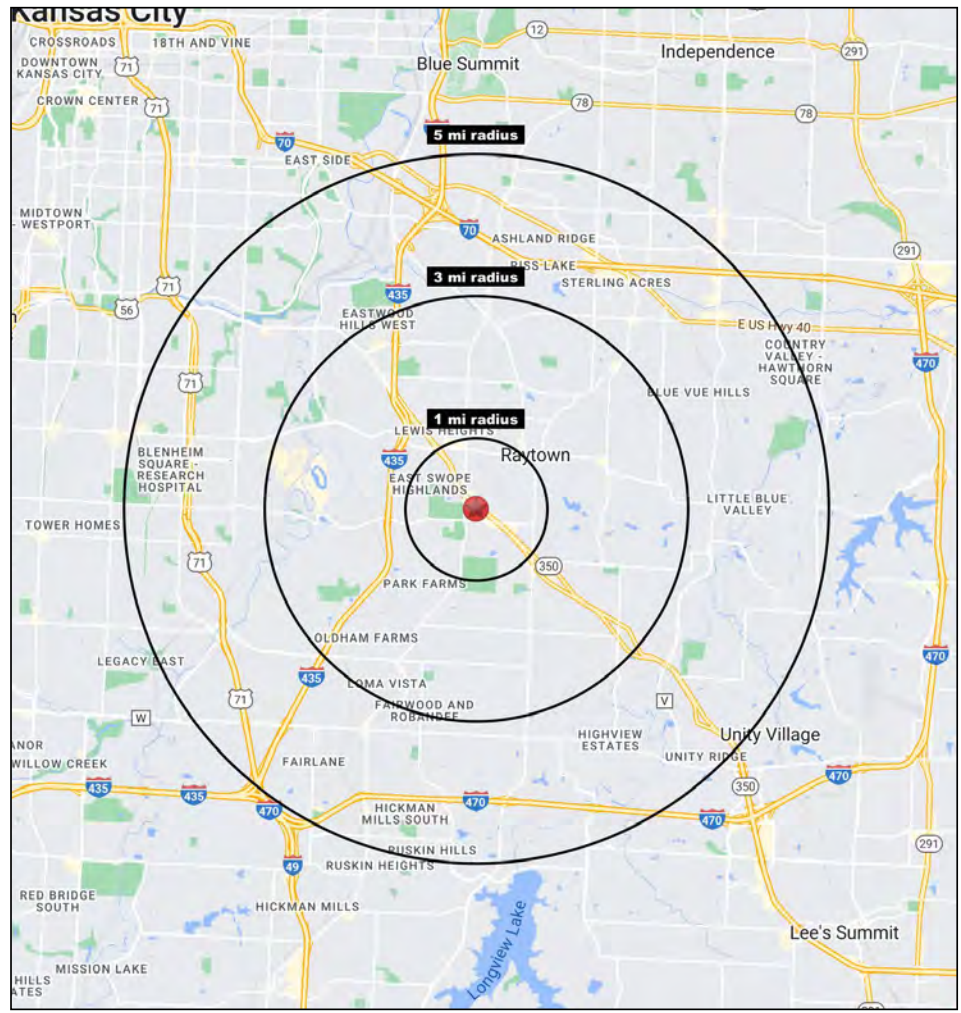
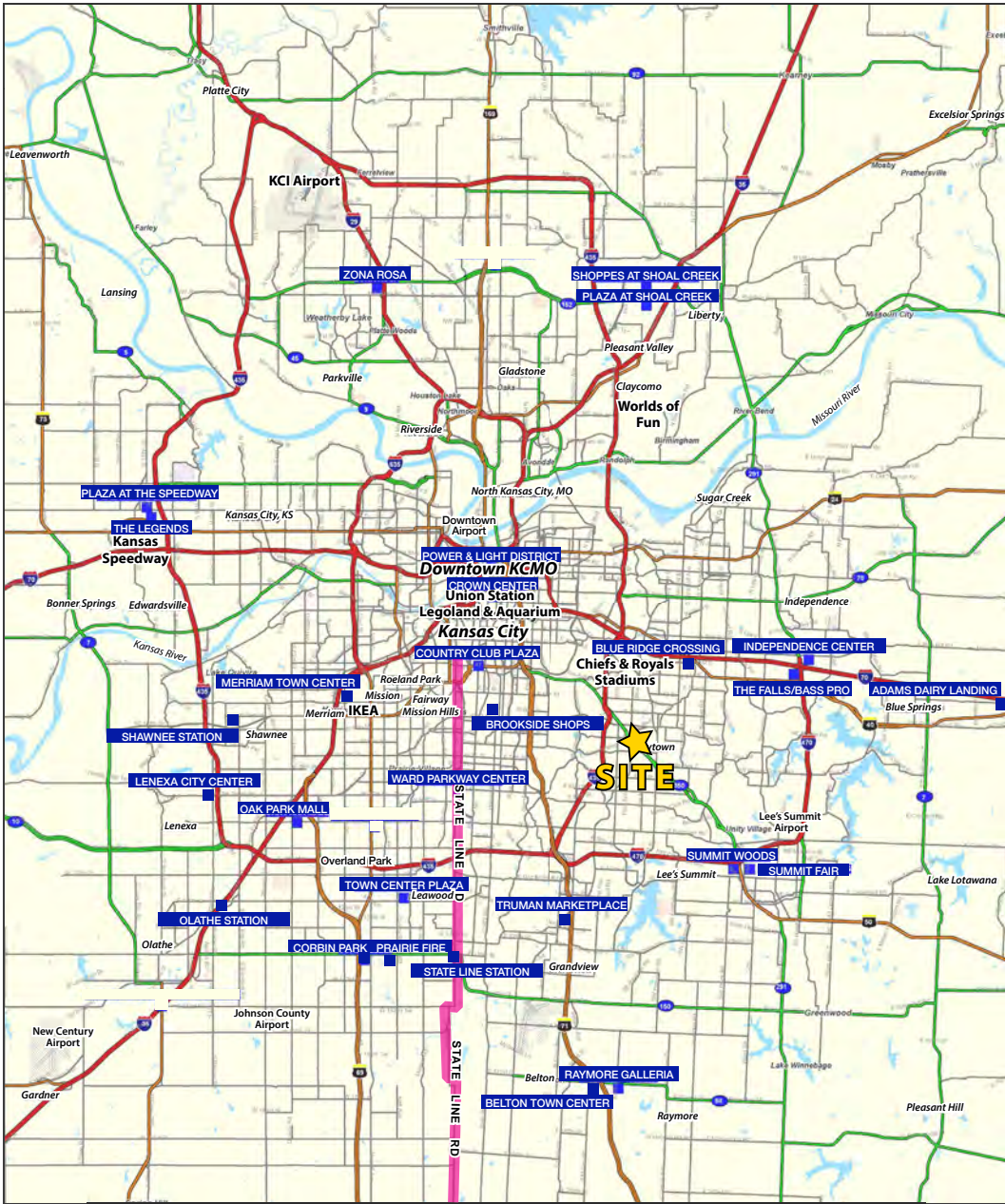


All information furnished regarding property for sale or lease is from sources deemed reliable, but no warranty or representation is made as to the accuracy thereof and the same is subject to errors, omissions, changes of prices, rental or other conditions, prior sale or lease or withdrawal without notice.



350 HIGHWAY RETAIL BUILDING FOR LEASE

6912 Hunter Street, Raytown, Missouri



Block & Company, Inc., Realtors | 605 W. 47th Street, Ste. 200, Kansas City, MO 64112 | 816.753.6000 | www.blockandco.com



All information furnished regarding property for sale or lease is from sources deemed reliable, but no warranty or representation is made as to the accuracy thereof and the same is subject to errors, omissions, changes of prices, rental or other conditions, prior sale or lease or withdrawal without notice.



350 HIGHWAY RETAIL BUILDING FOR LEASE

6912 Hunter Street, Raytown, Missouri

6912 Hunter Street Raytown, MO 64133	1 mi radius	3 mi radius	5 mi radius
Population			
2023 Estimated Population	6,759	56,755	132,056
2028 Projected Population	6,729	57,686	133,365
2020 Census Population	6,684	56,605	131,836
2010 Census Population	6,640	55,861	129,035
Projected Annual Growth 2023 to 2028	-	0.3%	0.2%
Historical Annual Growth 2010 to 2023	0.1%	0.1%	0.2%
2023 Median Age	36.9	38.4	38.1
Households			
2023 Estimated Households	3,017	23,996	55,571
2028 Projected Households	2,968	24,029	55,329
2020 Census Households	2,951	23,640	54,867
2010 Census Households	2,882	22,803	52,872
Projected Annual Growth 2023 to 2028	-0.3%	-	-
Historical Annual Growth 2010 to 2023	0.4%	0.4%	0.4%
Race and Ethnicity			
2023 Estimated White	56.4%	51.3%	44.6%
2023 Estimated Black or African American	31.4%	37.9%	44.4%
2023 Estimated Asian or Pacific Islander	1.7%	1.6%	1.6%
2023 Estimated American Indian or Native Alaskan	0.5%	0.4%	0.4%
2023 Estimated Other Races	10.1%	8.8%	9.0%
2023 Estimated Hispanic	9.0%	7.9%	8.3%
Income			
2023 Estimated Average Household Income	\$68,945	\$80,395	\$74,930
2023 Estimated Median Household Income	\$50,605	\$59,308	\$56,432
2023 Estimated Per Capita Income	\$30,850	\$34,067	\$31,625
Education (Age 25+)			
2023 Estimated Elementary (Grade Level 0 to 8)	2.2%	1.6%	2.4%
2023 Estimated Some High School (Grade Level 9 to 11)	5.8%	5.7%	7.1%
2023 Estimated High School Graduate	38.4%	34.1%	35.0%
2023 Estimated Some College	24.5%	27.0%	26.1%
2023 Estimated Associates Degree Only	8.4%	8.6%	8.1%
2023 Estimated Bachelors Degree Only	15.3%	15.3%	14.2%
2023 Estimated Graduate Degree	5.4%	7.7%	7.1%
Business			
2023 Estimated Total Businesses	397	1,645	4,103
2023 Estimated Total Employees	4,453	15,052	41,023
2023 Estimated Employee Population per Business	11.2	9.2	10.0
2023 Estimated Residential Population per Business	17.0	34.5	32.2

©2023, Sites USA, Chandler, Arizona. 480-491-1112 Demographic Source: Applied Geographic Solutions 4/2023, TIGER Geography - RS1

